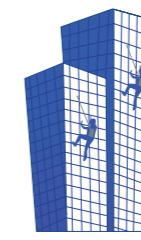


QUICK REFERENCE CARD

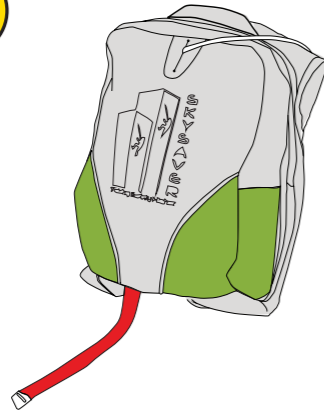


SKYSAVER

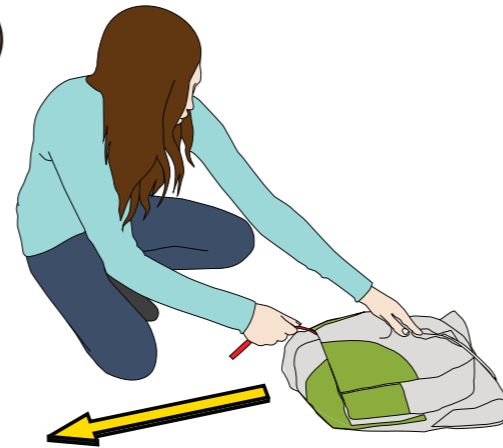
Taking Safety Higher

REMOVE FROM STORAGE

1



2



STAY LOW

3



PUT ON LIKE A BACKPACK

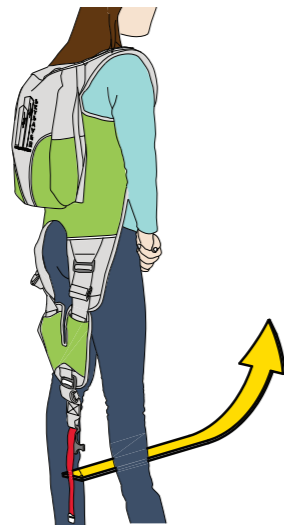
4



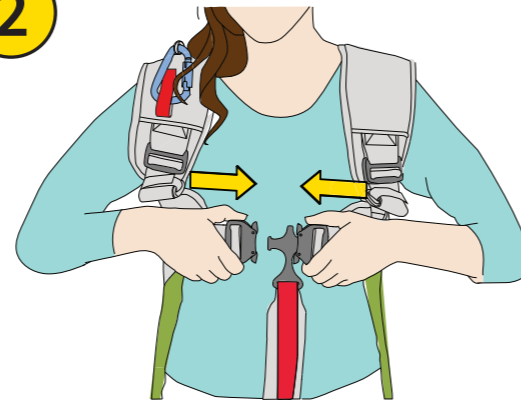
A

CONNECT ALL BUCKLES - TIGHTEN UP ANY LOOSE STRAPS

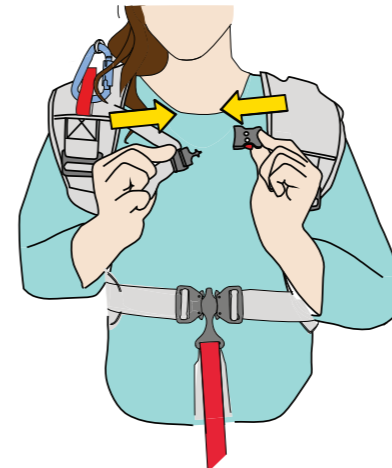
1



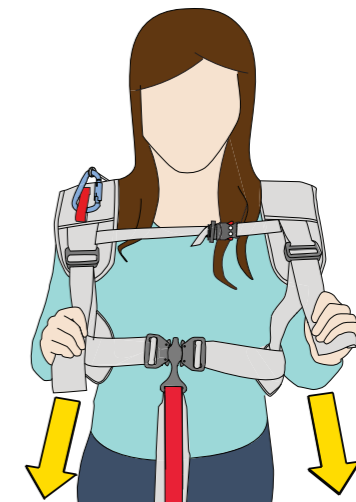
2



3



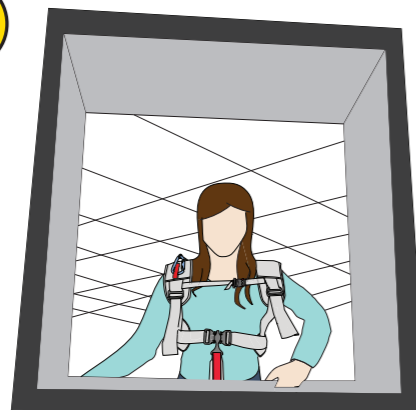
4



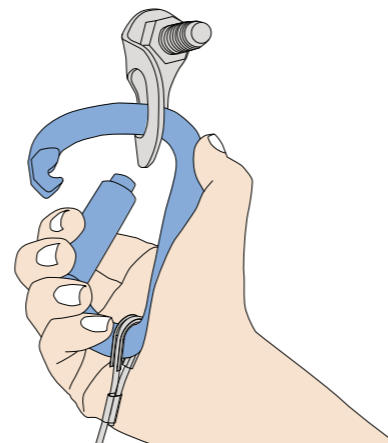
B

LOCATE A SAFE EXIT POINT - CONNECT TO AN ANCHOR POINT AND EXIT THE WINDOW CALMLY

1



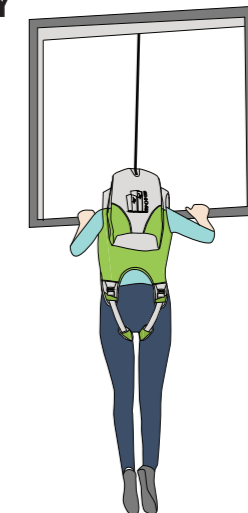
2



3



4



C